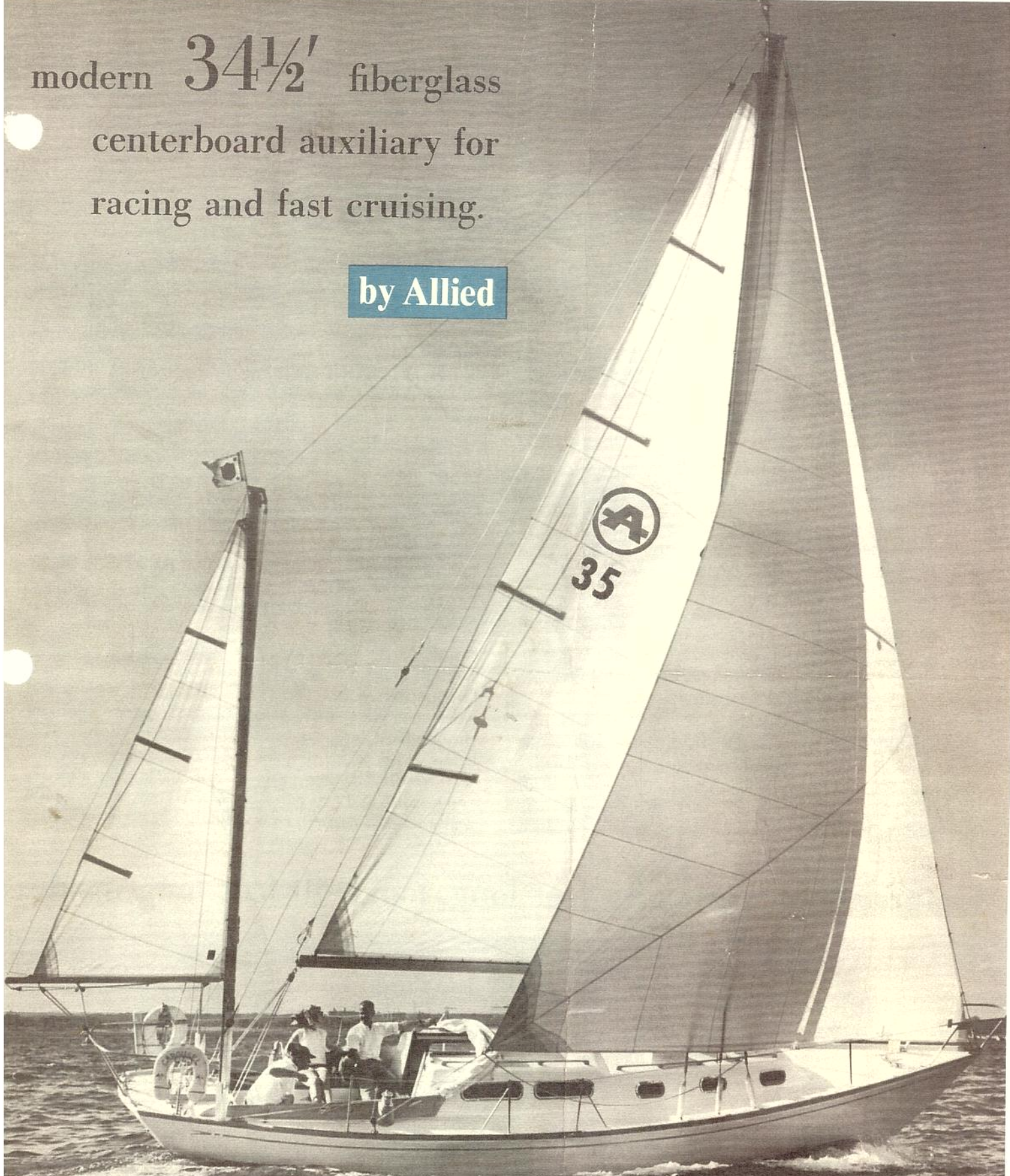


modern 34½' fiberglass
centerboard auxiliary for
racing and fast cruising.

by Allied



SEABREEZE

ALLIED BOAT CO., INC.

SEABREEZE

KEEL/CENTERBOARD
HIGHEST QUALITY FIBERGLASS
CRUISING/RACING YACHT

Fine comments and racing reports of SEABREEZE "35" owners from coast-to-coast — in this her second season since introduction at the 1964 New York Motor Boat Show — continue coming in:

"You win. I looked from the East Coast to the West Coast and back again and I just bought a SEABREEZE. She is just *better quality* and suits me better in many other ways." —A.G.A. - Alexandria, Va.

"All in all, the boat is a delight and the general quality of the workmanship is excellent. A lot of interest has been stirred up locally." —Dr. R. S. - Los Angeles

"I have been looking since September — SEABREEZE is of the best quality and we plan to campaign her in the Southern Circuit this winter."

—P. T. - Sarasota, Fla.

In 1965 SEABREEZE #37 took 2 firsts at Edgartown, Mass., race week and 2nd in class in the 240 mile Vineyard race with a 120 mile beat to windward in 15 to 25 (15-25) knot winds.

BUILT BY YACHTSMEN FOR YACHTSMEN, the SEABREEZE "35" offers the discerning buyer more accommodation, more speed, more comfort for lengthy cruising or racing than any boat now on the market. With her 10'3" beam, moderate ends and costly high quality fiberglass craftsmanship, you go to sea in SEABREEZE

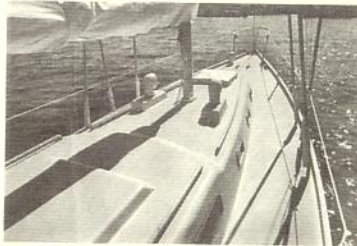
with confidence and pride and speed. She is an attractive addition to every anchorage or club cruise. In the hands of any reasonably experienced sailor, she is a serious contender for major racing honors (CCA rating: 23.6 est.).

SALES POLICY AND PRICING of the SEABREEZE "35" is dictated by a philosophy of *putting maximum value into the boat* — where it belongs. Our direct-selling method brings you into direct business relationships with the officers of Allied Boat Company Inc. Our Warranty stands behind every boat affording you honest New England square-dealing and protection on your investment.

CUSTOM BUILT AT STOCK BOAT

PRICES: SEABREEZE "35" is a production yacht, but so carefully crafted above and below decks as to place her in the

custom class. We make her as complete as we can. For example, when you go aboard SEABREEZE "35", you'll find s/s bow pulpit, stern rail, eight s/s stanchions and bases complete with *gated* plastic coated life-lines, chrome hardware, teak exterior trim, three burner gimbaled range with oven, hot and cold pressure water system; you'll find *two pairs* of teak grab rails atop the trunk cabin and two pairs *inside* for your safety; you'll find a custom crafted, counter high, beverage locker; in



Seabreeze measures 35 feet long, looks 40 feet long inside.



Left, Seabreeze "35" under #1 Genoa shows power and stiffness in fresh breeze. Note clean run.

After the day's run, dining for six aboard the Seabreeze "35" provides the elegant touch for owners and guests.

Under #4 Genoa — a sail rapidly gaining favor with Seabreeze owners — she settles into a long, dry beat to windward, moving fast and easily.



She's designed to win races and built to withstand gales.

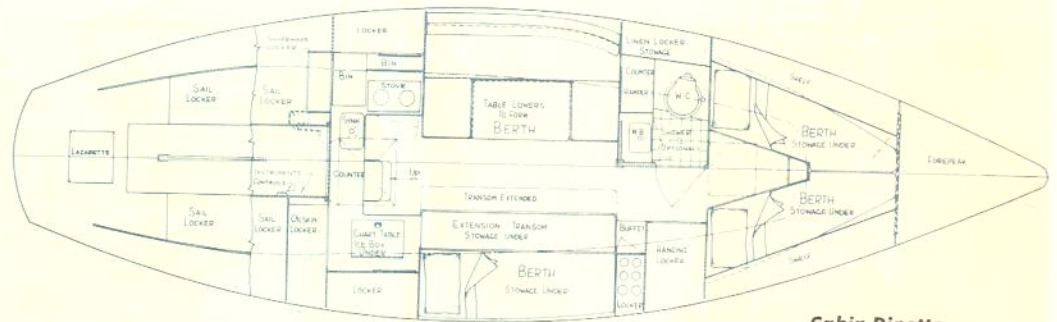
every SEABREEZE "35", you'll find generous use of teak below, sheathing off all fiberglass; and solid teak drawer fronts, teak panel doors, ladders and hatches — all standard at no extra cost on SEABREEZE "35".

You'll also find two optional cabin arrangements: take your pick — at no extra cost — each designed for sleeping six husky six-footers in great comfort; the standard layout with extension transom bunks, port and starboard; or, the dinette layout — acclaimed one of the finest on the market — which offers group seating for as many as eight, yet *easily* converts into a comfortable 6'5" x 47" double bunk (without the inconvenience of making and getting into quarter berths).

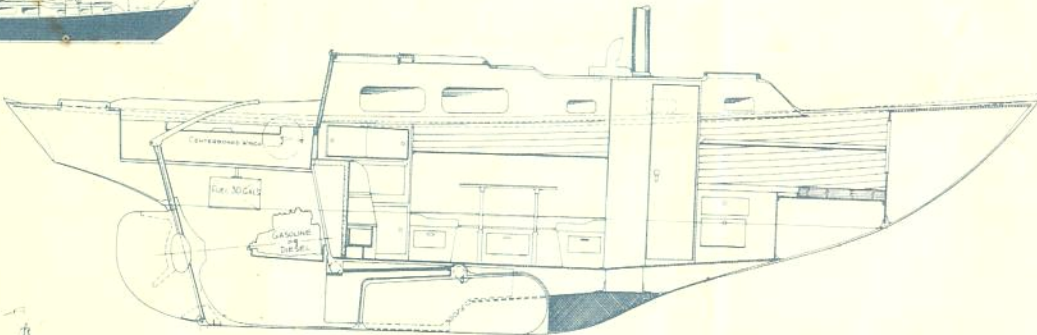
These and many other features of the SEABREEZE "35" appeal to the lady of the boat, who will find the plain surfaces, quiet pastel vinyl upholstery materials and easily cleaned formica counters a delight to keep spotless. They also permit personalizing your SEABREEZE "35" by blending bulkhead selection of either white or teak wood pattern, with formica counter tops of

various colors which can in turn be accented by the vinyl mattress covers (4" foam) available in several color options.

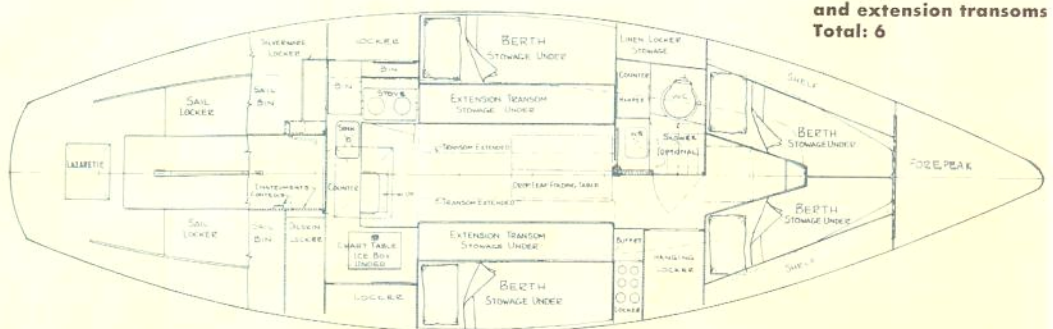
INVESTMENT PROTECTION: All Allied yachts are handcrafted to rigid specifications. Elaborate quality controls maintain the integrity of the original MacLear & Harris design in long-life fiberglass. Hulls are molded in such a way as to insure uniform resin-to-glass ratios throughout the hull structure. Deck, trunk cabin and cockpit are molded in one piece which is then permanently glassed and bolted to the one-piece hull, rendering a bottle-tight total structure. Indeed, so sound are Allied's production techniques and controls as to win for both SEABREEZE "35" (and her sister ships the famed SEAWIND "30" and LUDERS "33") a place on the roster of approved fiberglass yacht fabricators of a leading marine insurance underwriter, affording buyers of our boats a 5%-10% reduction in insurance premium! These approved standards of Allied's obviously insure long-life and satisfactory service, plus high re-sale value for all SEABREEZE "35" owners.



Cabin Dinette
Table lowers to form
6'5"x47" double berth
Total: 6



Cabin Standard
Facing pilot berths
and extension transoms
Total: 6

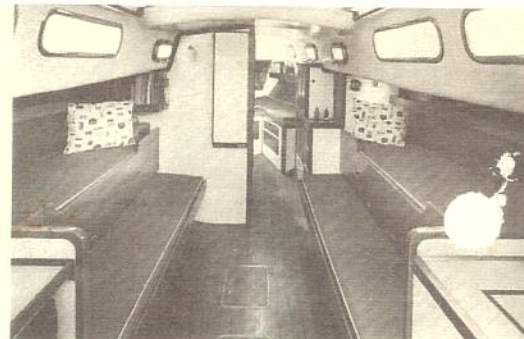




Above: Note generous galley and navigating work areas, F/W gear locker, and many handy stowage lockers aboard Seabreeze "35".



Luxurious dinette arrangement (optional at no extra cost) is wonderful spot for after-race games lounging and dining — seats up to eight (with starboard transom). Sleeps two in 6'5" comfort.



Top: This is whence Seabreeze gets her reputation for being a 35-footer but looking like 40-footer inside (and out). Modern open plan, with easy-to-clean formica, vinyl and teak surfaces, brings extra light, air and charm to this great boat.

Above view shows Seabreeze "35's and Seawind "30's proceeding down assembly lines at modern Allied Boat Company plant, Catskill, (on the Hudson River), New York, handy to New York thruway, Mass. turnpike, Albany Airport, Rip Van Winkle Bridge. Boats are picked up here and sailed by new owners, or shipped all over U.S. by or rail transport.

SEABREEZE "35" is a thoroughly-tested, highly refined and well-engineered fiberglass example of the modern keel/centerboard off-shore cruising/racing yacht, of the type made famous by FINISTERRE. Over 45 Seabreezes have been built and are in service. America's finest auxiliary at stock boat prices. Meticulously crafted in every way.

STANDARD EQUIPMENT ON ALL SEABREEZE "35"s

1. Dinette or standard layout optional (sleeps six)
2. Chrome and/or anodized aluminum hardware
3. S.S. bow pulpit with running lights
4. Eight S.S. Stanchions with gated lifelines
5. S.S. stern rail
6. Spreader lights
7. Anchor rode deck pipe
8. Anodized aluminum spar (grounded)
9. 1/4" S.S. 1x19 standing rigging
10. Eight 1/2" Bronze turnbuckles and toggles
11. Heavy S.S. chain plates
12. S.S. halyards with dacron tails
13. Six large opening ports with screens
14. Two 4" dorade ventilators
15. Complete genoa gear with 8' track
16. Roller reefing gear
17. Two #5 geared sheet winches
18. One #2 top action jib halyard winch
19. One #2 main halyard reel winch
20. One #2 top action main sheet winch
21. Honduras mahogany or teak exterior trim
22. Cockpit cushions
23. Teak interior trim and cabin sole
24. Teak interior handrails
25. 6'5" full width berths with 4" thick vinyl covered foam mattresses
26. Ten square feet counter and work area in galley
27. 150 pounds ice capacity, 8 cubic feet storage in ice chest
28. Formica covered bulk heads, choice of colors
29. King sized chart table
30. Enclosed toilet room, molded vanity
31. Three burner gimbaled stove with oven
32. Large glass and beverage locker
33. Pressure hot and cold water
34. 110 volt shore power, two outlets in galley
35. Electric and hand bilge pumps
36. Deluxe recessed instrument panel
37. Two heavy duty 12 volt batteries
38. Master switch and fuse panel
39. 4-way safety starter switch
40. Engine room exhaust blower
41. 25 h.p. Gray engine, 40 amp alternator
42. 32 gallon Monel gas tank
43. 45 gallon integral water tank
44. Choice of hull colors

ONE YEAR WARRANTY

Specifications subject to change without notice

SEABREEZE "35"

by Allied

Designed by MacLear & Harris; built by Allied Boat Company, Catskill, New York.

Length overall:	34'6"
Length waterline:	24'0"
Beam:	10'3"
Draft, board up:	3'10"
Draft, board down:	7'0"
Sail area, sloop rig:	550 sq. ft.
Sail area, yawl rig:	575 sq. ft.
Displacement:	13,600 lb.
Ballast:	4,000 lb. lead
Engine:	25 HP Gray Sea Scout

SEABREEZE by **Allied Boat Company, Inc.**

Main St., Catskill, N. Y. • Phone 518-943-2212

BUILDERS OF FINE SAILING YACHTS: SEAWIND 30, LUDERS 33, SEABREEZE 35

12/65

SOLD BY: ALDEN-ALLIED YACHT SALES, INC.

South Street (Luders Shipyard) • Stamford, Connecticut • Phone 203-324-9583